

Your First Web-Based Database Application

Whil Hentzen
Hentzenwerke Corporation

About Me

- ◆ Hentzenwerke Corp. (15 yrs)
- ◆ Editor, FoxTalk
- ◆ Author (6 books), including VFP 6 Fundamentals & 1999 DevGuide
- ◆ Publisher, The Essentials for VFP 6

Session Goals

- ◆ **Discuss the mechanisms underlying Web-based database systems**
- ◆ **Describe how to set up the software to run a Web server on a machine**
- ◆ **Describe the concepts behind three uses of a database to work on the Web**

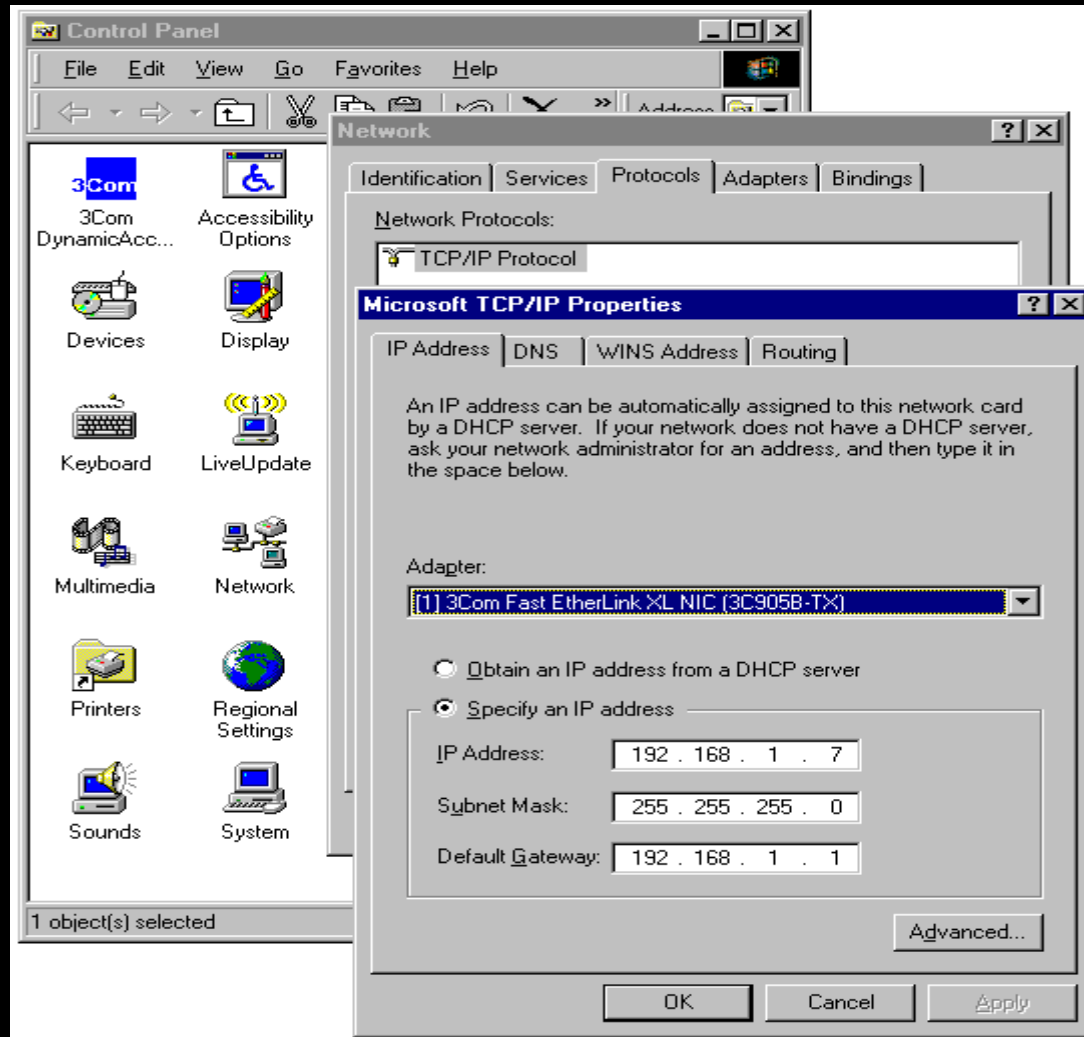
Session Requirements

- ◆ Intermediate knowledge of VFP programming, including basic class development
- ◆ Basic experience with Windows networks helpful

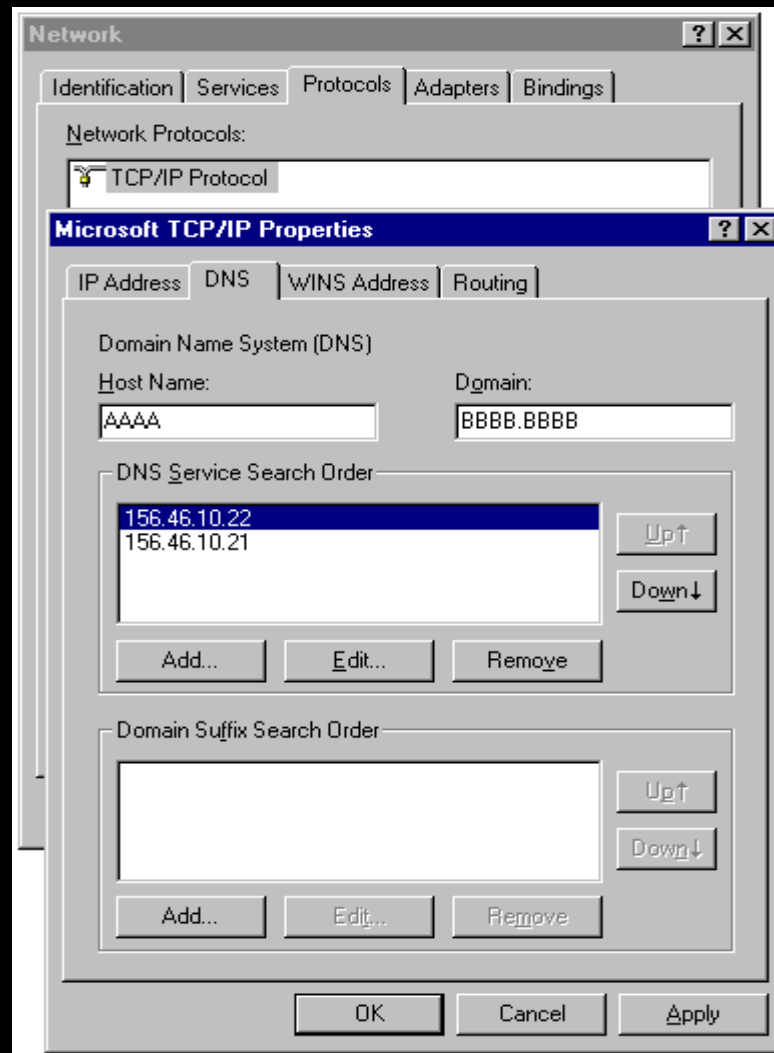
Internet Architecture

- ◆ **Collection of TCP/IP networks**
- ◆ **Each computer on each network has an IP address**
- ◆ **Domain Name Servers**

Setting the IP Address



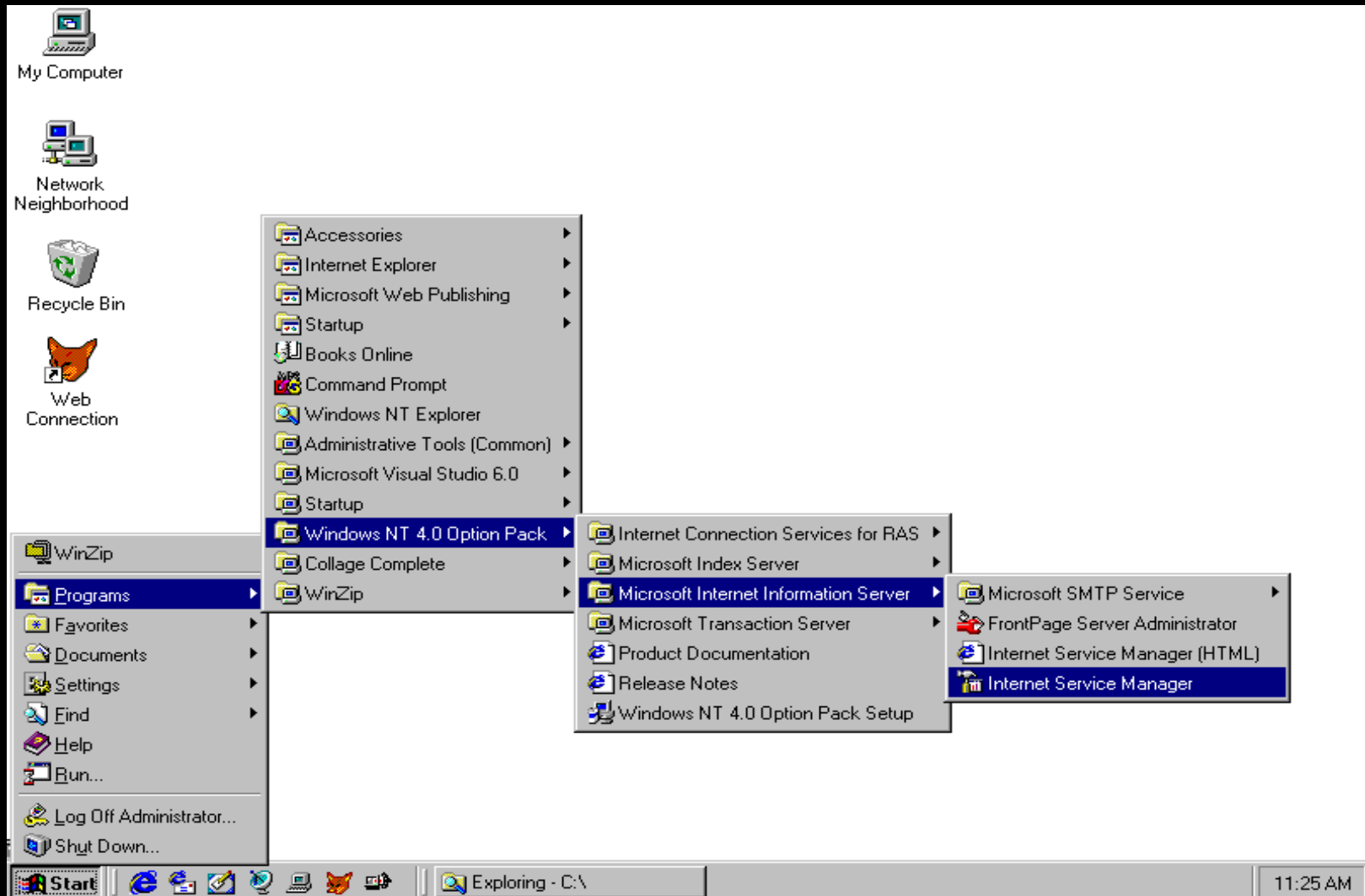
Setting the DNSs



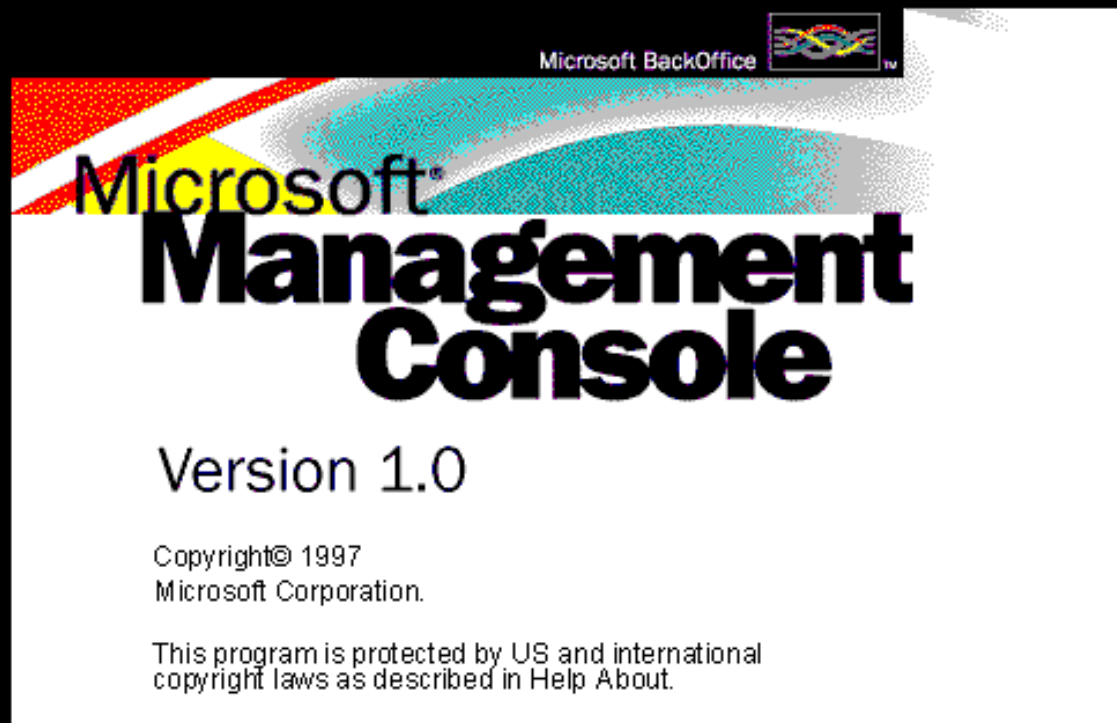
How a Web Server works

- ◆ Dishes up pages
- ◆ Browser “renders” pages
- ◆ Home page and default page

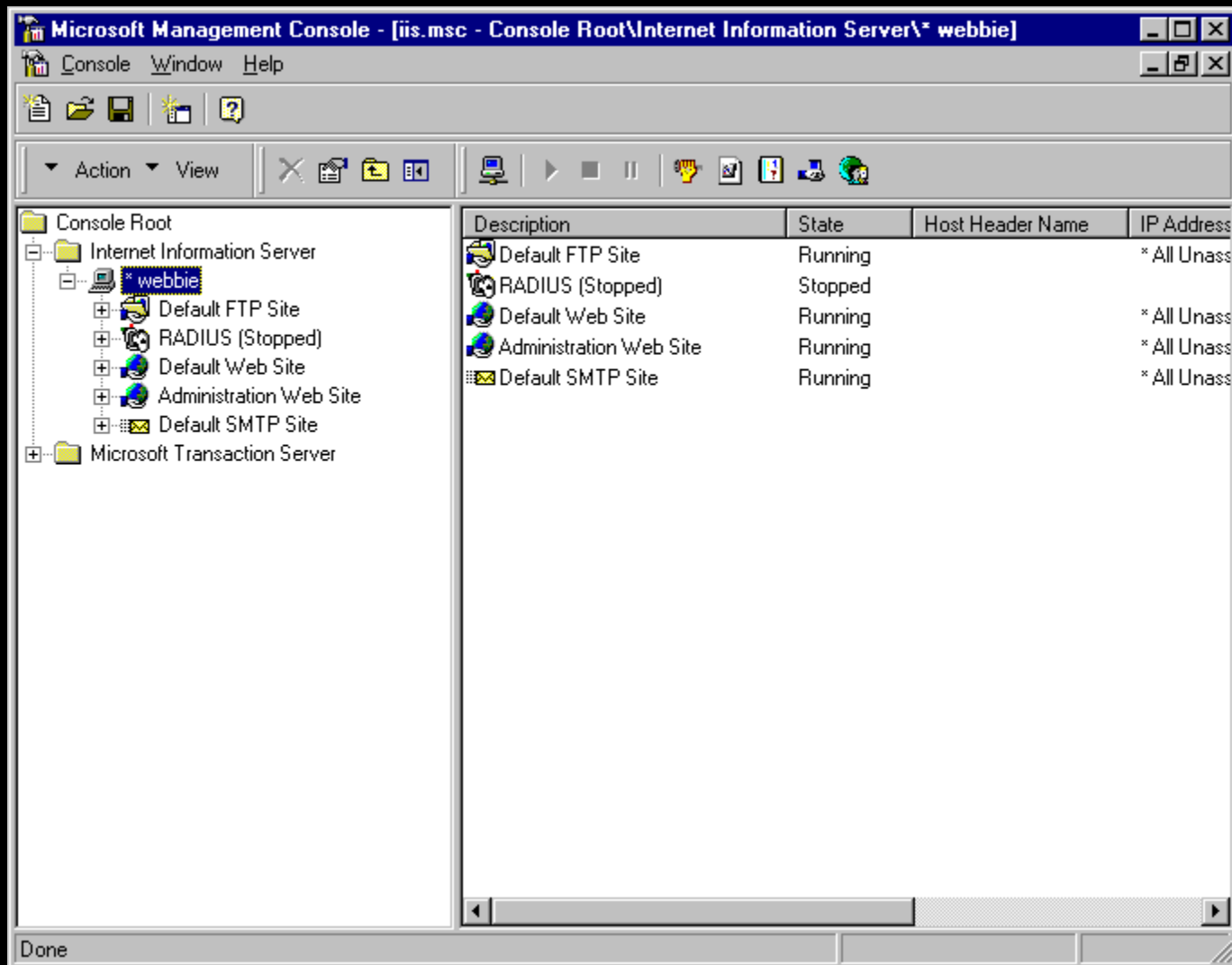
Getting to MMC



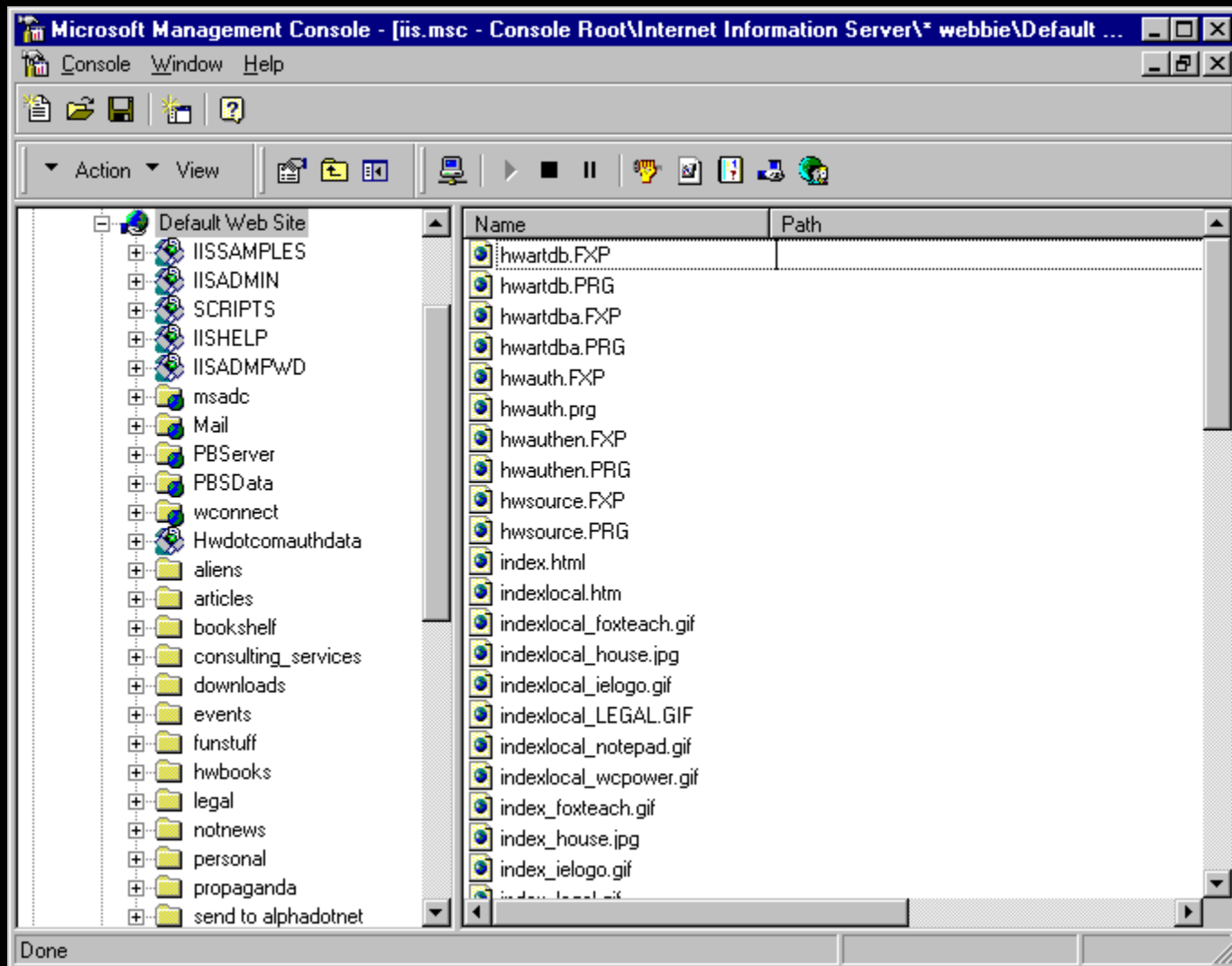
Hmmm....



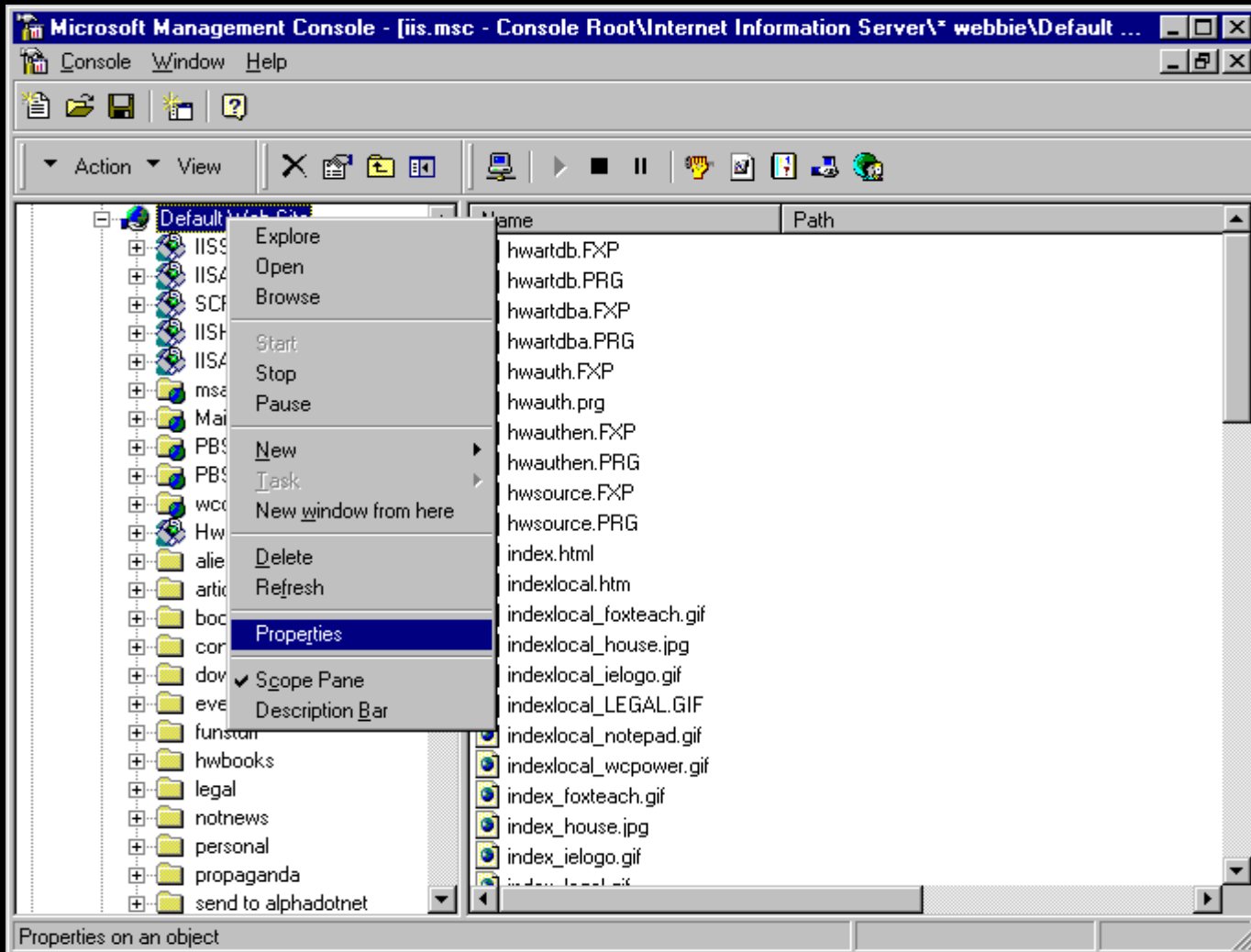
MMC is the home



Default Web Server



Web Server Properties



Web Site properties

Default Web Site Properties

Documents | Directory Security | HTTP Headers | Custom Errors
Web Site | Operators | Performance | ISAPI Filters | Home Directory

Web Site Identification

Description:

IP Address:

TCP Port: SSL Port:

Connections

Unlimited
 Limited To: connections

Connection Timeout: seconds

Enable Logging

Active log format:

Home Directory

The screenshot shows the 'Default Web Site Properties' dialog box with the 'Home Directory' tab selected. The dialog has a title bar with a question mark and a close button. Below the title bar are several tabs: Documents, Directory Security, HTTP Headers, Custom Errors, Web Site, Operators, Performance, ISAPI Filters, and Home Directory. The 'Home Directory' tab is active, showing options for where content should come from: 'A directory located on this computer' (selected), 'A share located on another computer', and 'A redirection to a URL'. Below this is a 'Local Path' field containing 'C:\webstuff\hwdotcoma' and a 'Browse...' button. There are three columns of checkboxes: 'Access Permissions' (Read checked, Write unchecked), 'Content Control' (Log access checked, Directory browsing allowed unchecked), and another 'Content Control' (Index this directory checked, FrontPage Web checked). An 'Application Settings' section contains a 'Name' field with 'Default Application', a 'Remove' button, a 'Starting Point' dropdown set to '<Default Web Site>', a 'Configuration...' button, a 'Run in separate memory space (isolated process)' checkbox (unchecked), a 'Permissions' section (Script selected), and an 'Unload' button. At the bottom are 'OK', 'Cancel', 'Apply', and 'Help' buttons.

Default Web Site Properties [?] [X]

Documents | Directory Security | HTTP Headers | Custom Errors
Web Site | Operators | Performance | ISAPI Filters | **Home Directory**

When connecting to this resource, the content should come from:

- A directory located on this computer
- A share located on another computer
- A redirection to a URL

Local Path: Browse...

Access Permissions: Read Write

Content Control: Log access Directory browsing allowed

Content Control: Index this directory FrontPage Web

Application Settings

Name: Remove

Starting Point: <Default Web Site> Configuration...

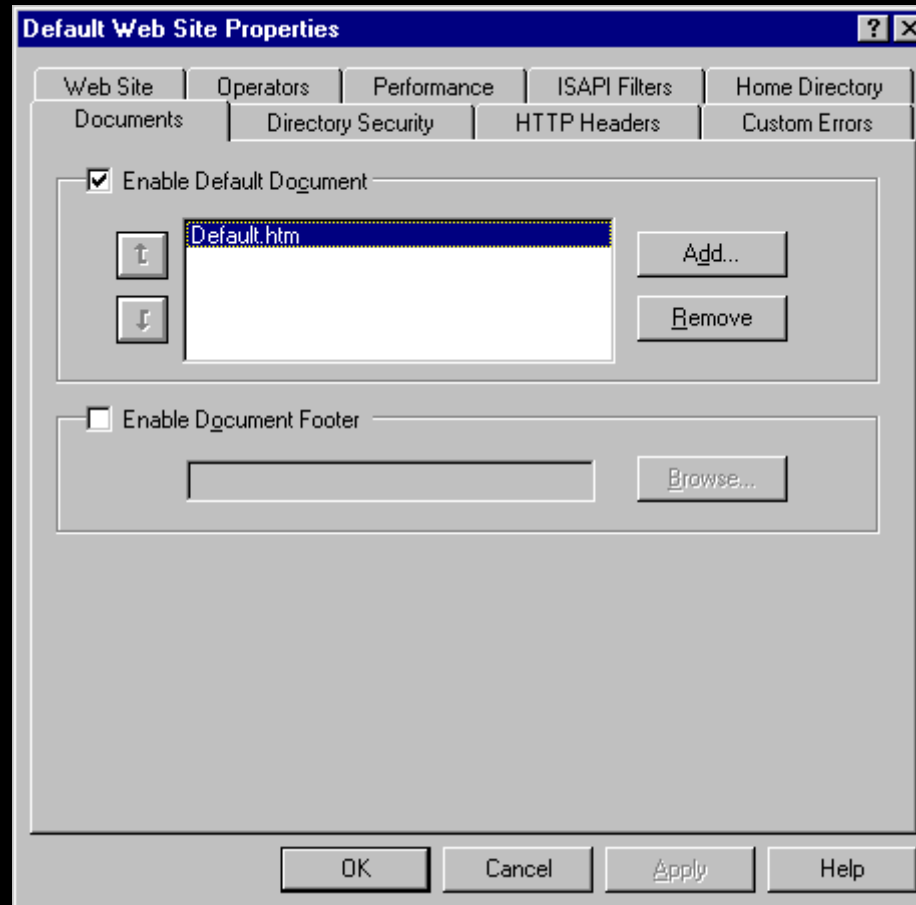
Run in separate memory space (isolated process)

Permissions: None Script Execute (including script)

Unload

OK Cancel Apply Help

Default Document



HTML Formatting

<HTML>

<TITLE>This is a title </TITLE>

<H1>

Heading</H1>

<BODY>

Body text for the page

</BODY>

</HTML>

Images and Hyperlinks

```
<IMG SRC="sample.gif"  
      WIDTH="100" HEIGHT="125">
```

```
<A HREF="baseball.html">Click  
  here for Baseball stats</A>
```

Controls

```
<FORM METHOD="POST"  
  ACTION=http://hw.com/cgi-  
win/wwcgi.dll?getart>
```

```
<B>Author:</B> <INPUT  
  TYPE="TEXT" NAME="Author"  
  SIZE="20">
```

```
<INPUT TYPE="SUBMIT"  
  NAME="SubmitButton"  
  VALUE="Kill James Bond –  
Now!">
```

Automated Web Pages

- ◆ **Content in a database**
- ◆ **VFP apps to update content**
- ◆ **Programs to generate HTML**
- ◆ **Skeleton HTML page with semaphores**

Database Publishing

- ◆ Present controls to user

```
<B>User:</B> <INPUT TYPE=  
  "TEXT" NAME="Username">
```

```
<B>Pasword:</B> <INPUT TYPE=  
  "TEXT" NAME="Password">
```

- ◆ Call VFP app from Submit

```
<FORM ACTION=  
  "/wconnect/wc.dll?  
  hwauthen~authent"  
  method="post"> ')
```

Database Publishing - II

- ◆ **Grab info from controls**
- ◆ **loCGI=THIS.oCGI**
- ◆ **loHTML=THIS.oHTML**
- ◆ **lcUsername=upper(loCGI.Form("Username"))**
- ◆ **lcPassword=upper(loCGI.Form("Password"))**

Database Publishing - III

- ◆ **Manipulate that data with your VFP app**
- ◆ **Return results through generic methods**

Where next?

- ◆ www.west-wind.com
- ◆ Knowledge Base
- ◆ www.microsoft.com
- ◆ 280 Internet-related periodicals
- ◆ 4000 Internet books

thank-you-good-night